

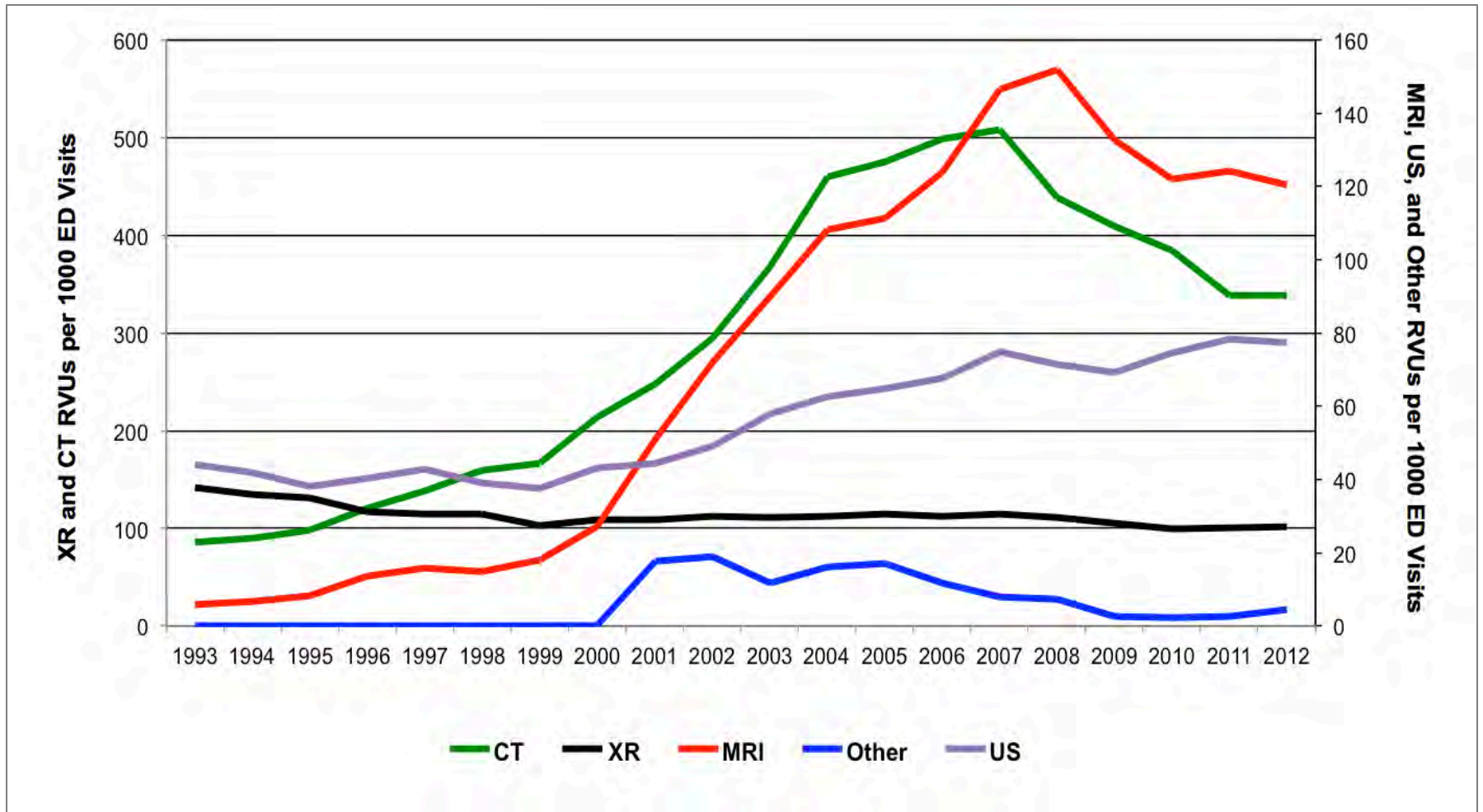
Emergency Department Imaging

After 15 years (1993-2007) of increasing ED imaging use, we observed 25% reduction in overall imaging, 33% reduction in CT, and 21% reduction in MRI per 1000 ED visits between 2007-2012

Reference:

Raja AS, *et al.* Radiology Utilization in the Emergency Department: Trends of the last Two Decades. American Journal of Roentgenology, 2014. In Press.

Trends in ED Imaging RVUs by Study Modality from 1993 to 2012



Timing of Illustrative Institutional Initiatives to Reduce Inappropriate High Cost Imaging (CT and MRI) in the ED

